
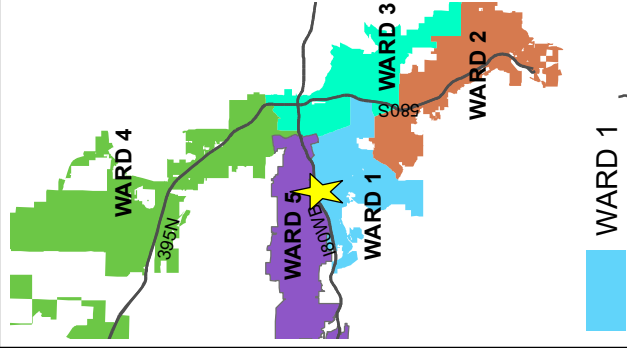


# AREA MAP

LDC22-00044

(Coral Academy Rezoning)

Subject Site ► 



Development  
Services  
Department



The information herein  
is approximate and  
is intended for display  
purposes only.

Date: January 2022  
Scale: 1 inch = 600 feet




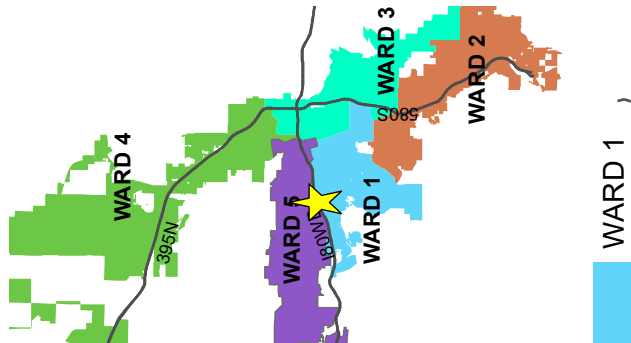


# VICINITY MAP

LDC22-00044

(Coral Academy Rezoning)

Subject Site ► 



The information herein is approximate and is intended for display purposes only.

Date: January 2022

Scale: 1 inch = 300 feet





**LDC22-00044**

(Coral Academy Rezoning)

**ZONING = SPD**

Subject Site ▲

## Zoning Designations

SPD

8-F-S

SF-11

MF-21

MF-30

LLR-1

NC



PGOS



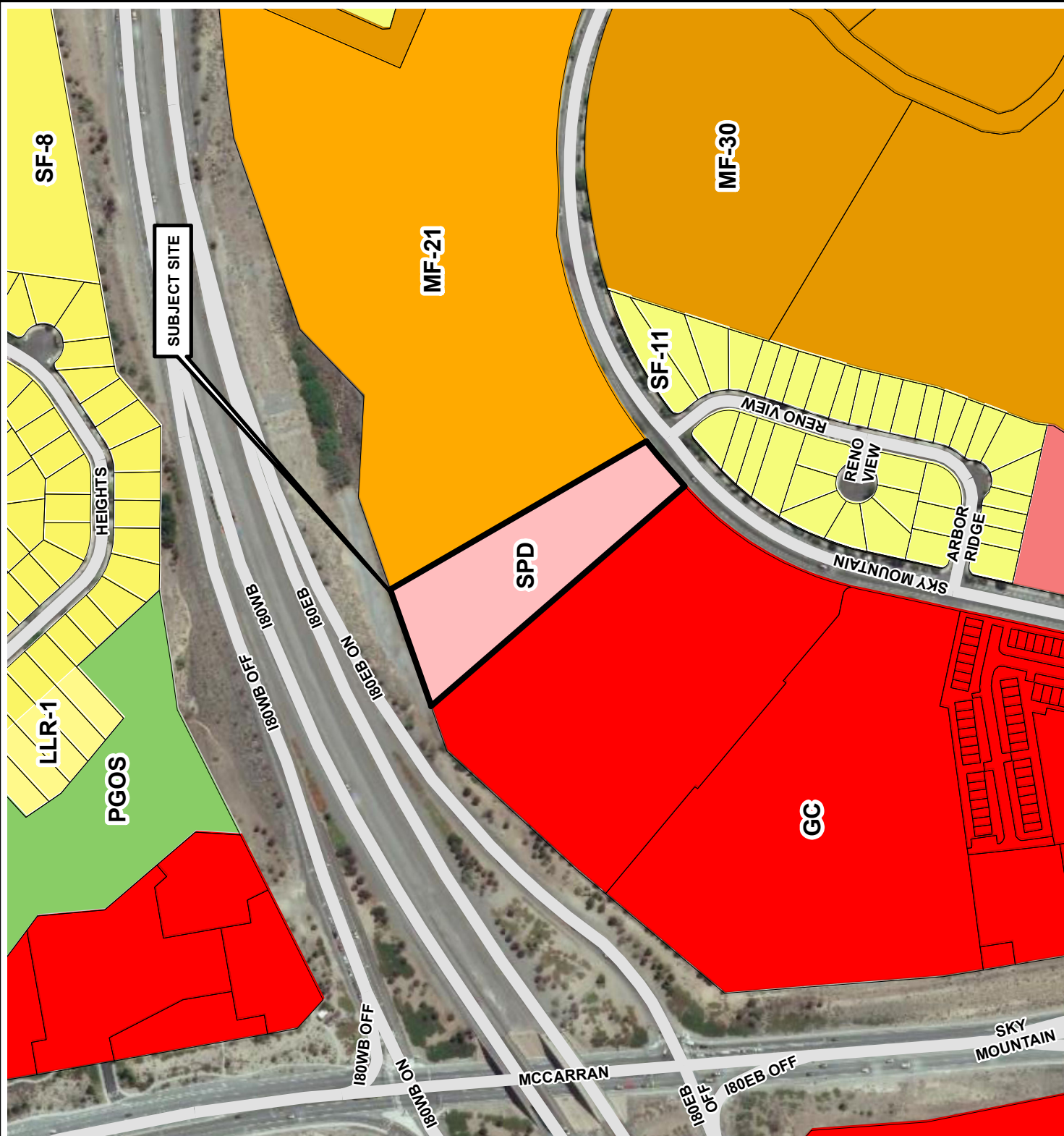
Development  
Services  
Department

The information heron is approximate and is intended for display purposes only.




DATE: June 2022

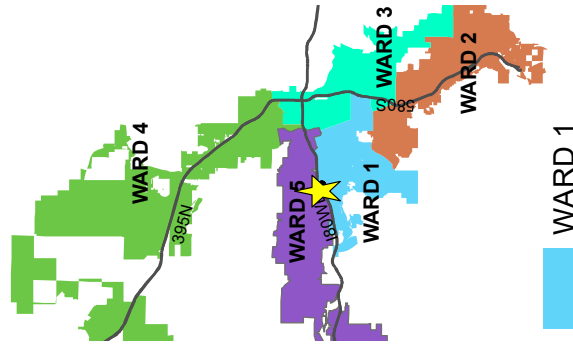
SCALE: 1 inch = 300 feet



# MASTER PLAN MAP

LDC22-00044  
(Coral Academy  
Rezoning)

Subject Site ► 



Development  
Services  
Department



The information herein  
is approximate and  
is intended for display  
purposes only.

Date: January 2022  
Scale: 1 inch = 300 feet

